




# xxter

## Product Information

---

This folder provides an overview of the features xxter has to offer  
Discover what you could realize with xxter to make your life easier

A photograph of a man and a woman sitting together, looking at a tablet. The woman is on the left, with long dark hair, wearing a light blue shirt. The man is on the right, wearing a yellow shirt. They are both smiling and looking at the tablet. The image is overlaid with a blue semi-transparent shape on the left side.

## Maximum user convenience with professional solutions

At xxter, we aim to provide maximum ease of use with professional solutions.

We do this based on our vision that home and office automation can only be successful when it truly contributes to the daily comfort of the user. The comfort of complete control, insight, and automation, but always in combination with ease of use, reliability, security, durability, sustainability, and affordability

The products and services of xxter, offer extensive possibilities to make smart homes and buildings even smarter. This product folder provides an overview of the most important possibilities of the xxter controller. Because at xxter we are constantly working on more innovations, you will always find the latest information about the possibilities of our products on our website.

Please visit [www.xxter.com](http://www.xxter.com).



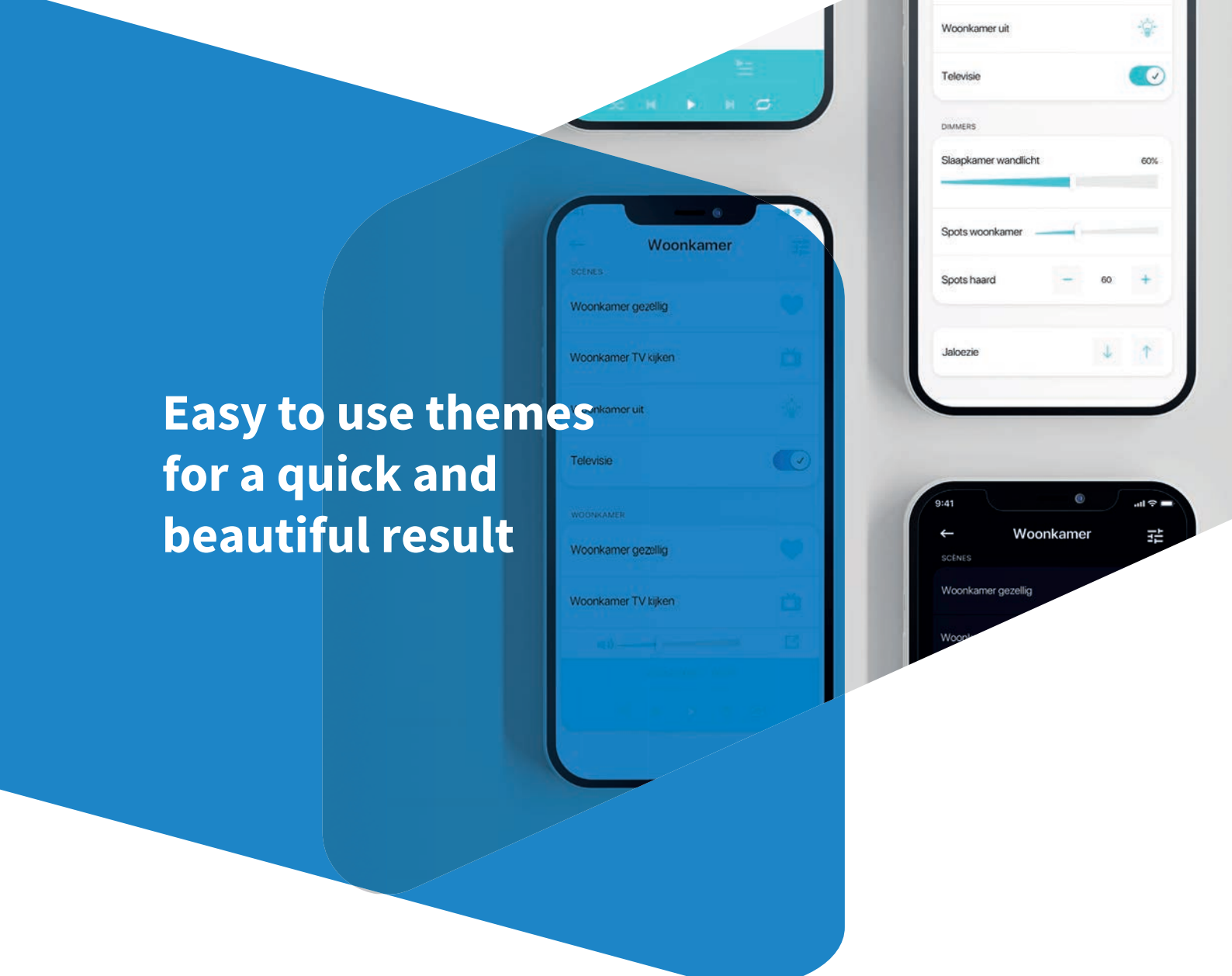
The xxter controller with app control is the central module in your home or building, that allows you to automate all smart functionalities and control it with the free xxter app on a tablet, smartphone, or computer. The xxter controller speaks many different protocols, that combine seamlessly into one installation, whether it concerns KNX, Philips Hue, Sonos, or one of the many others.

Built into the xxter controller are many functions that add value to any installation. For instance, the flexible scenarios and scheduler, the extensive logic modules, statistics, presence simulation and even complete room thermostat controllers. This makes xxter indispensable for every smart home or building.

Both the technical configuration and the visualization can be completely managed using the My xxter environment and can be set up exactly to your taste and liking. The xxter controller also offers the possibility to securely perform the KNX programming, bringing together the complete management of the installation for the professional.

For commercial use, xxter also provides several solutions, like guest access in hospitality, standardized energy monitoring for buildings and the monitoring of critical functions. For commercial use, a separate flyer is available.

All in all, xxter offers you maximum ease of use with professional solutions.



**Easy to use themes  
for a quick and  
beautiful result**

## Mobile control

With the free xter app you can control a home or building installation on as many devices as you want. The app communicates with xter through secure channels, which makes the app safe to use over the Internet. The app is available for smartphones and tablets from Apple and with Android, for Apple Watch and Windows and Mac computers. You can create the visualization you want on 'My xter', which allows you to create your own personal controller. With the simple QR code you can easily load your visualization in the app.

## The xter app provides:

- Easy to use themes for a quick and beautiful result
- Different profiles for different users
- Support for list pages and free design
- Control of all possible component types
- Camera and video intercom control
- Complete Sonos integration
- Charts and statistics
- Configuration access to scenarios, scheduler and presence simulation
- Support for Siri Shortcuts

# Scenarios

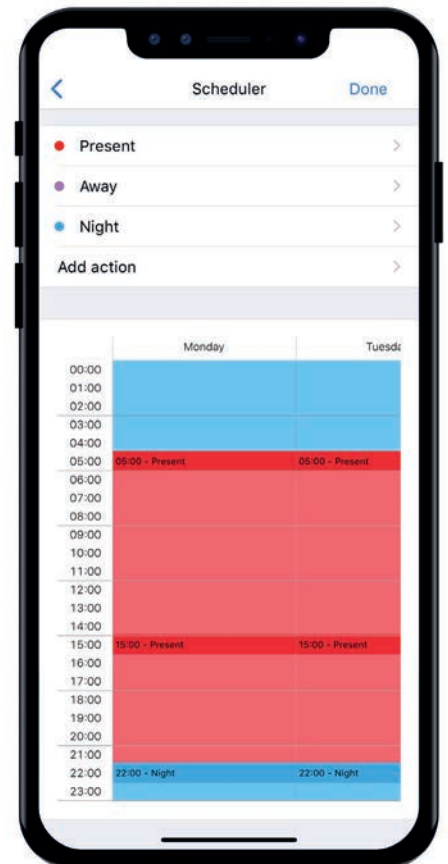
xxter has set the standard for ease of use for scenarios. The end user can create and change scenarios directly in the app and control every scenario in which lights should be included. Also curtains, thermostats and Sonos speakers can be included in a scenario. The user can change scenarios without the help of the installer and can always see the effect of a specific scenario.

- Unlimited number of scenarios
- Manageable in the app by the end user
- Combine scenarios with the scheduler or with logic

# Scheduler

The scheduler enables you to have specific actions activated at specified times. This could be an outside lamp for instance, which is switched on or off, but also a call of a scenario, the setting of a thermostat mode or the closing of the curtains in the evening, when it gets dark. The schedulers can easily be changed by the end-user with the app.

- Unlimited number of programs
- Manageable in the app by the end user
- Sunrise and sunset functions are available
- Available as weekly, daily, or simple schedulers





A photograph of a family of three dancing joyfully in a living room. A woman on the left is laughing and pointing, a man in the center is jumping with his arms raised, and a young girl on the right is running and dancing. They are on a colorful striped rug in front of a sofa. A large blue diagonal graphic is overlaid on the top right of the image.

**Sonos and xxter  
in perfect harmony**

# Sonos

xxter has a complete and certified integration with Sonos. Sonos devices are discovered automatically by the xxter controller and can be added to the visualization to control the speakers, select playlists and favorites, see album art and more.

The Sonos integration can also be used in scenarios, schedulers and in logic modules. This way, you can start your favorite radio station when you come home and always pause all audio when you leave the house. You can even play personalized audio clips or use text to speech based on events, for instance as a doorbell or other alert.

Scan QR code  
for instruction videos



Apart from Sonos speakers, xxter also allows a wide range of other audio and video equipment to be integrated, using uPnP, infrared receivers, RS232 or TCP commands. These protocols allow you to connect to most available sound and video systems.



## Graphs & Statistics

The built-in data analyzer automatically generates and calculates statistics and information about any components you want to monitor. This can be set up without any difficult settings, after which the data can be shown in all kinds of charts in the app.

Monitor the temperature of your central heating and display a chart of the last couple of days, weeks, or months. How much electricity have your solar panels produced? Monitor average values, maxima, minima, or totals. xxter collects, monitors, and analyzes all of them easily.

The xxter controller can monitor and store up to 100 datasets, free of charge.

For professional users, xxter also provides a standardized energy monitoring solution, according to BREEAM ("Building Research Establishment Environmental Assessment Method"). With this solution, measured usage is automatically uploaded to the xxter cloud and made available for dashboards and download. For BREEAM energy monitoring, a separate license is available.

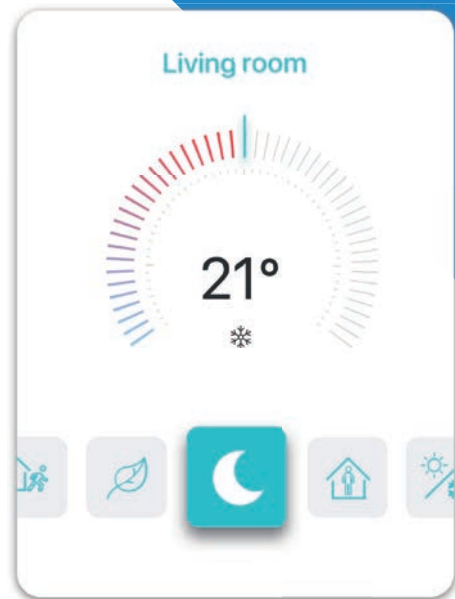




# Room Temperature Control

xxter is standard equipped with very complete room temperature control possibilities. With this integrated RTC functionality you can individually control the cooling and heating of up to 16 different rooms. Based on the available cooling or heating methods, for instance; central heating radiators, floor heating, air conditioning and ventilation you can create the exact configuration required for your situation.

With the xxter app, you have easy and complete control over every thermostat. Existing RTCs can also be completely integrated into xxter. Combine the xxter RTC with scenarios and the scheduler to make sure it is comfortable when you want and prevent unnecessary heating costs when you are not at home.

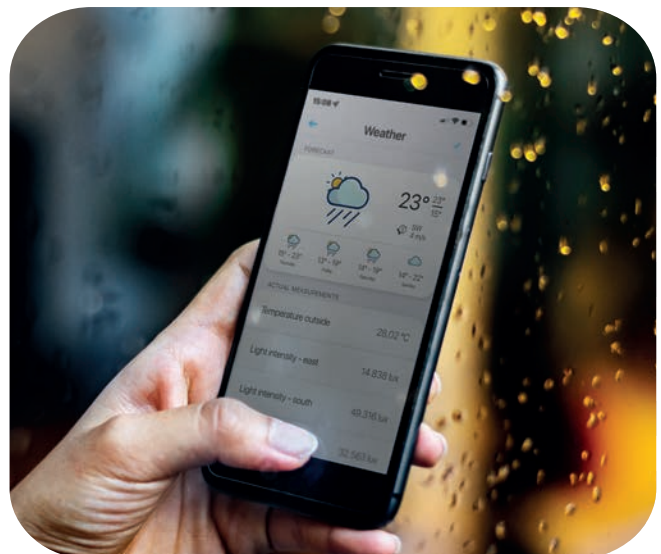


# Car charger integration

It is possible to integrate xxter with OCPP-compatible car chargers. This allows you to control the speed and time of your car charging from the xxter app or based on other information in the automation. For instance, you can schedule your car to charge dynamically at times your solar panels produce the most.

# Integrated weather forecast

The xxter controller is automatically connected with a weather forecast service, to provide detailed weather information for your location. This weather information can of course be shown in the xxter app, but also used in the logic modules. This allows you to create logic based on the predicted weather, for instance, to change irrigation settings based on expected rainfall or adjust climate controls to prepare for a particularly warm day.



# Camera integration

xxter supports seamless integration with network cameras, for instance with RTSP or MotionJPEG, including PTZ, if available. This allows you to use cameras directly in the app, but also to make a snapshot with the alert service and send them in a message, based on certain events, for instance when the doorbell rings.

## Alert Service

The alert service allows you to send messages from the installation to the user. For example, send a sms/text message when there is a frost risk or a leakage, send a monthly email with the latest meter readings or send a push message when the doorbell rings. Push messages can be sent together with a snapshot of a camera, to allow the user to always see who is at the door.

- Choose your own conditions to trigger a message
- Send alerts by push message, sms/text message, and email
- Add a snapshot of a camera to a push message
- In the app a log of all previous messages is available

## Intercom control

Combine xxter with a Mobotix, Robin, 2N or Doorbird intercom system to turn your phone or tablet into an intercom. Not only can you see who is at the door, but you can also communicate with your visitors. Together with the alert service, you receive a push message and can answer the door, wherever you are. Of course, you can also open your front door immediately.

- Mobotix T24, Robin, Doorbird and 2N IP intercom system support
- DTMF-codes possible for access and door control
- Connect other systems via SIP converter
- Available in the iOS and Android app





## xxter when you are not at home

xxter offers several useful options for when you are not at home. Of course, you can safely access your installation from outside, thanks to the secured solutions xxter provides. To help prevent a possible break-in, you can use the presence simulation which will imitate your habits while you are away. In case someone rings the doorbell, or something happens that might not be okay, you can immediately receive an alert with a camera image, so you can take action.

## xxter connect service

To allow safe access from the outside, xxter offers the Connect Service. This allows you to use your home automation and even your internal camera systems when you are not at home, without the need for these systems to be directly accessible over the Internet. There is no port forwarding or other external access required. This means hackers will not be able to gain access, while you can safely use all your automation possibilities even when you are underway.

The xxter Connect Service is a paid service, which can be purchased using the Apple App Store or the Google Play Store. It is also possible to buy this service for a long period directly at xxter. The Connect Service is very easy to set up and allows access to two separate xxter controllers from all mobile devices you might have.

In case you do not want to use the Connect Service, it is still possible to securely connect to your xxter controller. The secured application port that is used for the connection also relies on security certificates, is end-to-end encrypted and requires (additional) personal passwords.

## Presence simulation

With the presence simulation of xxter you can allow recorded actions to be played back when you are away, to make it seem someone is at home. The user can simply select which elements in the home should be recorded in the simulation. Then, through an option in the visualization or from the home installation (for instance (de)activating the alarm system), the playback of the recorded actions can be started or stopped. And whenever the pattern of the occupant changes, the simulation will always automatically change too.

# Supported protocols

xxter works with professional building automation and supports many different protocols. Of these, the KNX protocol offers the most options and reliability, which is also completely integrated into the xxter controller and connects directly. Apart from KNX, xxter also supports Modbus, BACnet, Philips Hue and DMX as home automation standards. xxter can function as a bridge between all these protocols, to create a single integrated environment. Furthermore, xxter supports many other standards for specific uses, like Sonos and uPnP for sound systems, or RTSP and SIP for intercom and camera systems.

## KNX



KNX is known as an International Standard, a European Standard as well as a Chinese Standard. There are hundreds of registered manufacturers of KNX products, which all work together perfectly. KNX also supports wireless connection options. Therefore, you can rely on a brand-independent and seamless integration of the entire automated home or building. Thanks to the built-in KNX integration of xxter, you can control and visualize all KNX products with xxter. xxter also provides a KNX IP-secure tunnel and routing function, to allow KNX programming with the xxter controller.

## Modbus



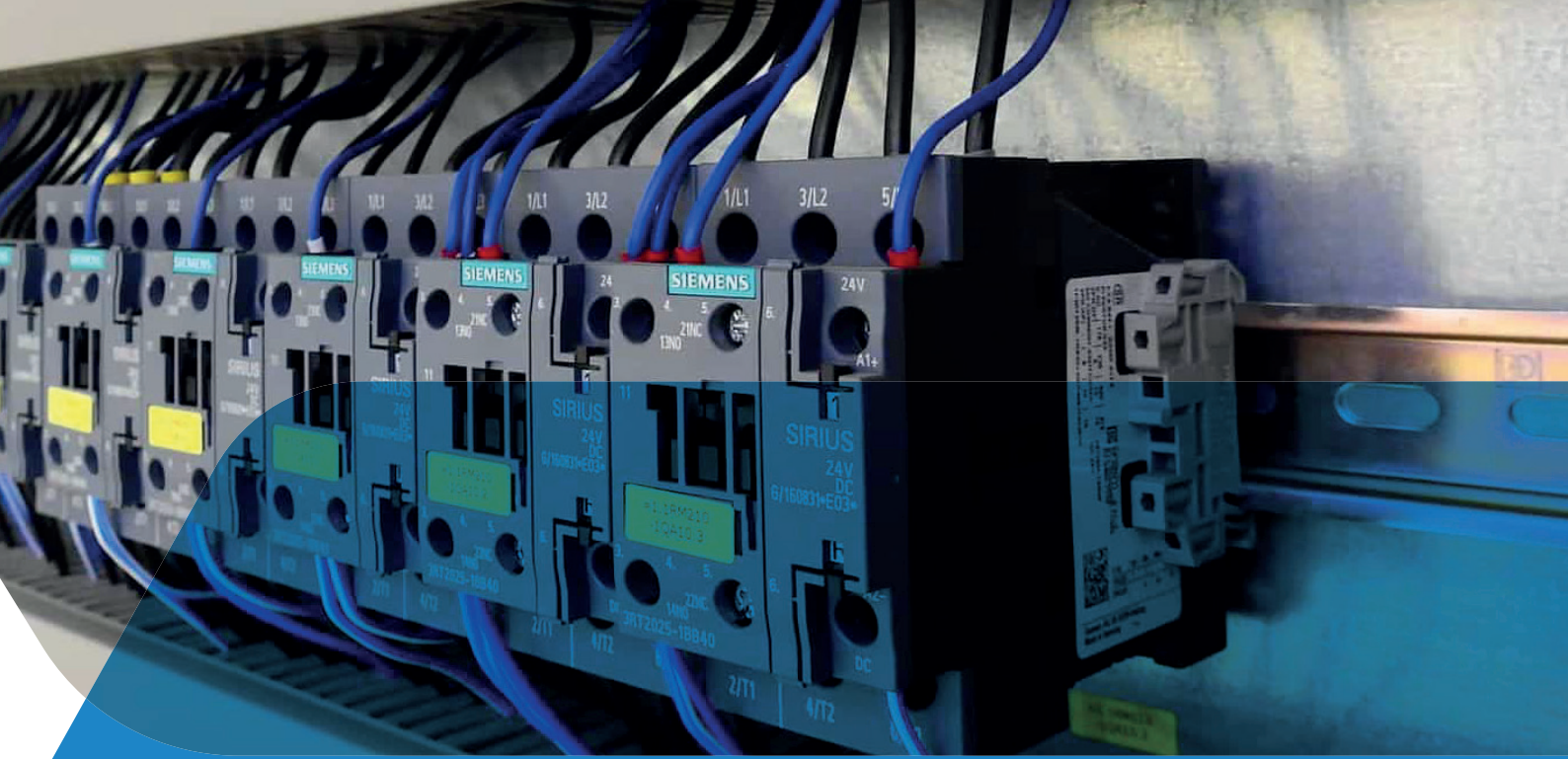
Modbus is a protocol widely used in energy meters and large heating and ventilation systems. You can integrate xxter with Modbus, via Modbus TCP. The xxter controller can act as a Modbus client, by connecting to a Modbus server. This means you can visualize Modbus data in the xxter app and use xxter to write to Modbus coils or registers, but you can also bridge KNX to Modbus and vice versa.

## Bacnet



BACnet is used as a building management protocol in large buildings. The xxter controller can act as a BACnet server so a BACnet client can connect to it. This means you can use the xxter controller to make the KNX or other components available to BACnet for visualization and control. As a BACnet server, you can use xxter to provide BACnet with binary inputs, outputs and values, as well as analogue inputs, outputs and values. To enable BACnet in xxter, an additional license is required.





## xxter works with professional building automation and supports many different protocols

The Hue logo consists of the word 'hue' in a lowercase, sans-serif font. Each letter is a different color: 'h' is red, 'u' is orange, 'e' is green, and 'e' is blue.

### Hue

Philips Hue is a widely used home automation protocol, including many types of (RGB) lights, sockets, and switches. You can connect up to 5 different Hue bridges, after which all connected lights and other components become available for xxter. This allows you to seamlessly integrate all Hue devices with the other protocols and create one installation.

The ArtNet Ethernet logo features the words 'ARTNET' in a large, bold, black, sans-serif font, stacked vertically. Below 'ARTNET' is the word 'ETHERNET' in a smaller, black, sans-serif font.

### DMX

ArtNet is used to directly control DMX leds and other lighting. Artnet is a worldwide used protocol for controlling DMX equipment over IP. With the use of ArtNet in xxter you can control DMX lights easily and use professional color lights in homes and businesses in an affordable and easy way. xxter can also serve as a bridge between the different protocols. You can start a light show from DMX and automatically let KNX dim the room or include several DMX elements into a scenario together with KNX lighting.



# Logic

xxter offers a powerful logic engine to quickly add extensive intelligence for any home or building automation. Logic is available in different ways: in the logic module, in scripts and in actions. For all these features, there are separate manuals available and on the xxter forum you can share your knowledge and questions with others. With the logic engine of xxter, there are no limits in what kind of automation you can create.

## Logic module

The logic module provides canvasses where you can drag and drop logic blocks and connect them to create advanced automations. Available logic blocks range from simple AND or OR ports, to more advanced blocks like virtual dimmers, timers, and curve alterations. As inputs, you can use elements from the installation, but also time or external triggers to initiate the logic.

## Scripts & Actions

With xxter scripts, you can create your own small programs within xxter, which are very flexible to use. xxter supports the generic script language Lua, as well as a native logical scripting language. Using calculations, conversions and equations on values allows you to achieve complex functionality in an easy way, which would not be possible without xxter.

With actions, you can configure any event as a trigger to perform other actions. It is also possible to set up additional constraints that are to be validated with the trigger. This makes it possible to add logic easily, that would otherwise require separate, difficult to configure components.

Scan QR code  
for instruction videos





## KNX recorder

With the KNX recorder, the xxter controller can monitor and store the KNX bus traffic for analysis, for instance, to detect a KNX problem. This way you don't have to be always connected with ETS or be on location to find the problem. The KNX recorder always stores the last 1000 recorded telegrams on the device. For professionals with an xxter PRO subscription, the telegrams can also be automatically uploaded to the xxter cloud. The recorded telegrams can be downloaded as an XML file and imported into ETS for analysis.

- Monitor KNX telegrams without an ETS connection
- Filter only the relevant group addresses
- Online storage for xxter PRO users

Scan QR code  
for instruction videos



## Installation & support

User convenience has always been xxter's primary focus. This applies to the daily use of xxter, but of course also to the installation. The configuration of xxter is completely available within the web browser and a wizard will help the professional to go through the necessary steps. There are manuals available for all functionality and users can ask questions or share their knowledge on the xxter forum. And, when you still require some assistance, our fluent English-speaking support is always available through email or phone during business hours (CET).

## Security & updates

With the solutions of xxter, you can always rely on the latest technologies regarding information security and privacy. This allows you to enjoy the extensive possibilities of home and building automation with peace of mind. All communication of the services and products of xxter use reliable, end-to-end encrypted connections and are restricted by passwords that only you know.



## Maximum ease of use with professional solutions

### Technical specifications

Size (lxwxh):	90x72x60mm (4 MW)
Type:	DIN-module
Weight:	100 grams
Voltage:	10-36 VDC
Power consumption:	1W (avg.)
Cooling:	passive
Storage temp:	-40°C to 85°C
Environment temp:	0 °C to 70 °C
Humidity:	0-90% non-condensing
Protection level:	IP20
Fire resistance:	UL94-V0 (housing)
Over voltage cat.:	Category III



### Get in touch:

Phone : +31 (0)20 - 2 18 42 01

Email : sales@xxter.com

Address : WG-plein 459,  
1054 SH Amsterdam,  
The Netherlands

